

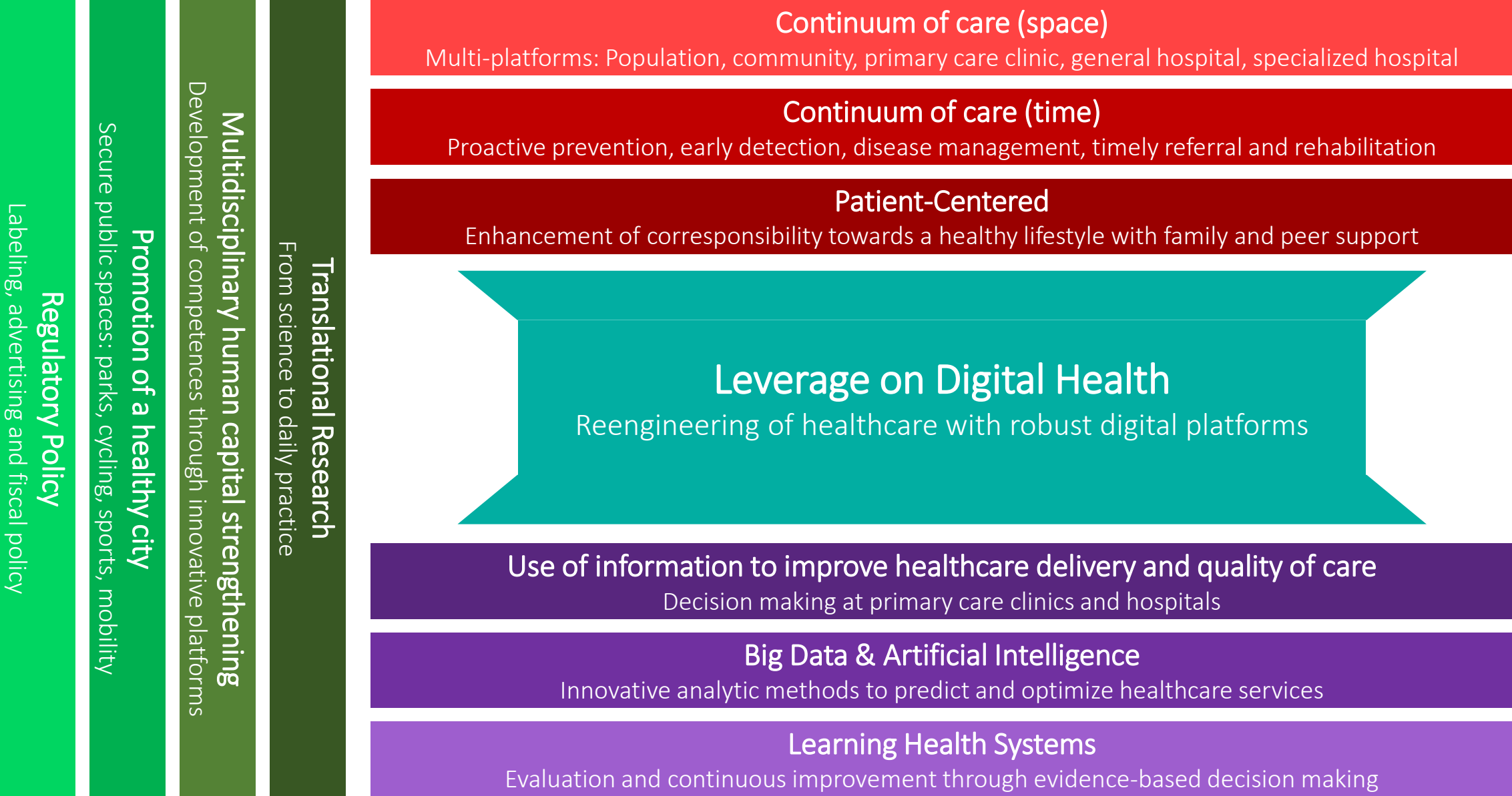
FUNDACIÓN
Carlos Slim

Diabetes & NCDs framework
Key elements for a regional proposal

09 May 2019 | Global Health Conference



Diabetes & NCDs Framework for a Regional Project Proposal



Diabetes & NCDs Framework for a Regional Project Proposal

Translational Research
From science to daily practice

Multidisciplinary human capital strengthening
Development of competences through innovative platforms

Promotion of a healthy city
Secure public spaces: parks, cycling, sports, mobility

Regulatory Policy
Labeling, advertising and fiscal policy

Continuum of platforms (spatial)
Community, primary care clinic, general hospital, specialized hospital

Continuum of care (time)
Proactive prevention, early detection, disease management, timely referral and rehabilitation

Patient-Centered
Enhancement of corresponsibility towards a healthy lifestyle with family and peer support

Leverage on Digital Health
Reengineering of healthcare with robust platforms and IoT

Use of information to improve healthcare delivery and quality of care
Decision making at primary care clinics and hospitals

Big Data & Artificial Intelligence
Innovative analytic methods to predict and optimize healthcare services

Learning Health Systems
Evaluation and continuous improvement through evidence-based decision making

Vertical interventions

Regulatory policy

- Labeling of food and beverages (e.g. Chilean labeling system)
- Regulation of advertising in TV programs targeted to children
- Tax to sugar sweetened beverages (e.g. Mexican taxes on sodas)

Promotion of a healthy city

Robust public infrastructure for the promotion of physical activity such as bike paths, parks and sports courts

Multidisciplinary human capital strengthening

- Use of digital platforms with asynchronous courses and performance tracking
- Integrated approach with CME credits and certification of clinical competences
- Open access MOOCs with the most common public health procedures
- Case-based knowledge sharing | The ECHO Experience

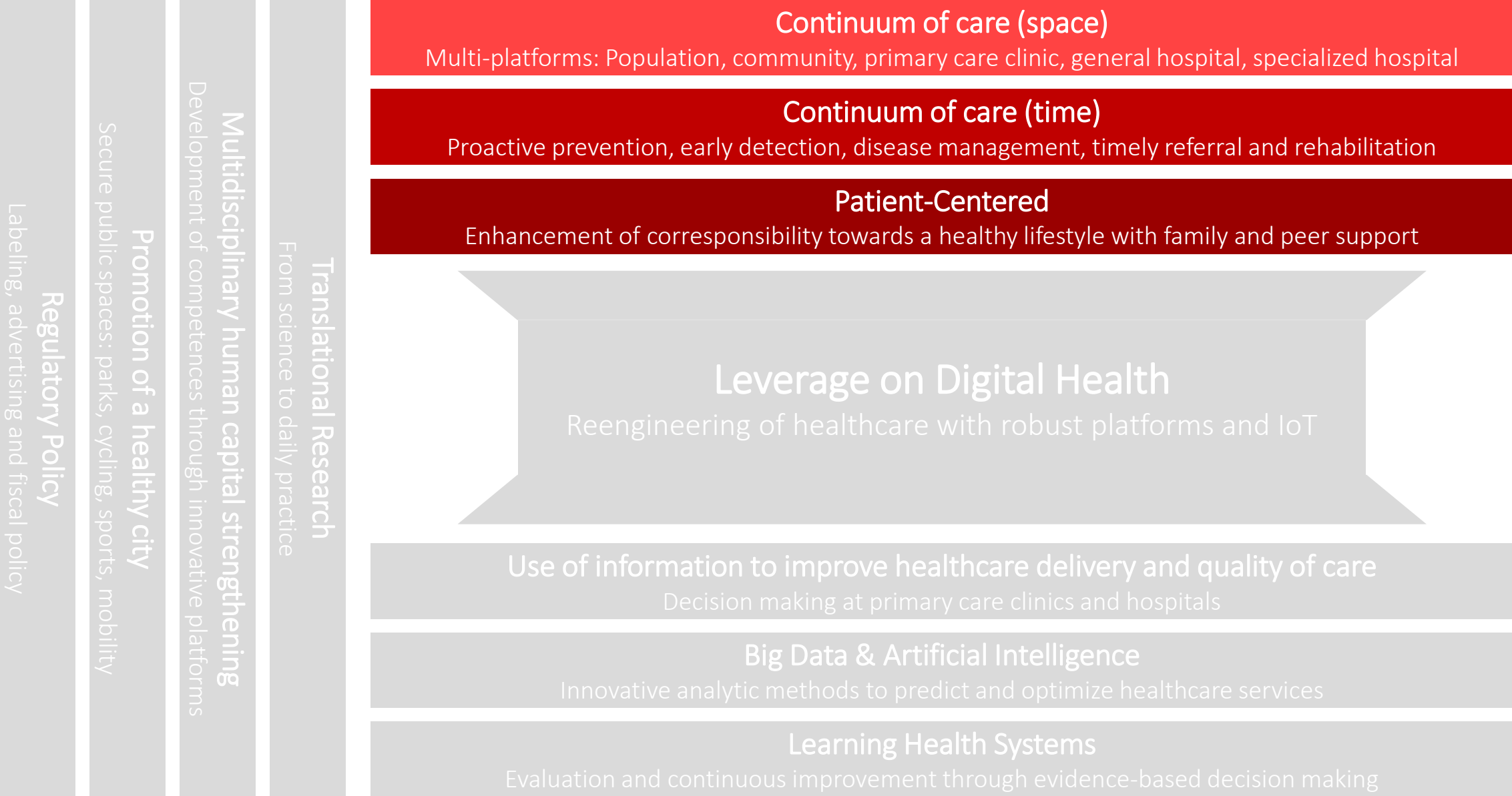
Translational Research

- National policies to promote rapid incorporation of innovations

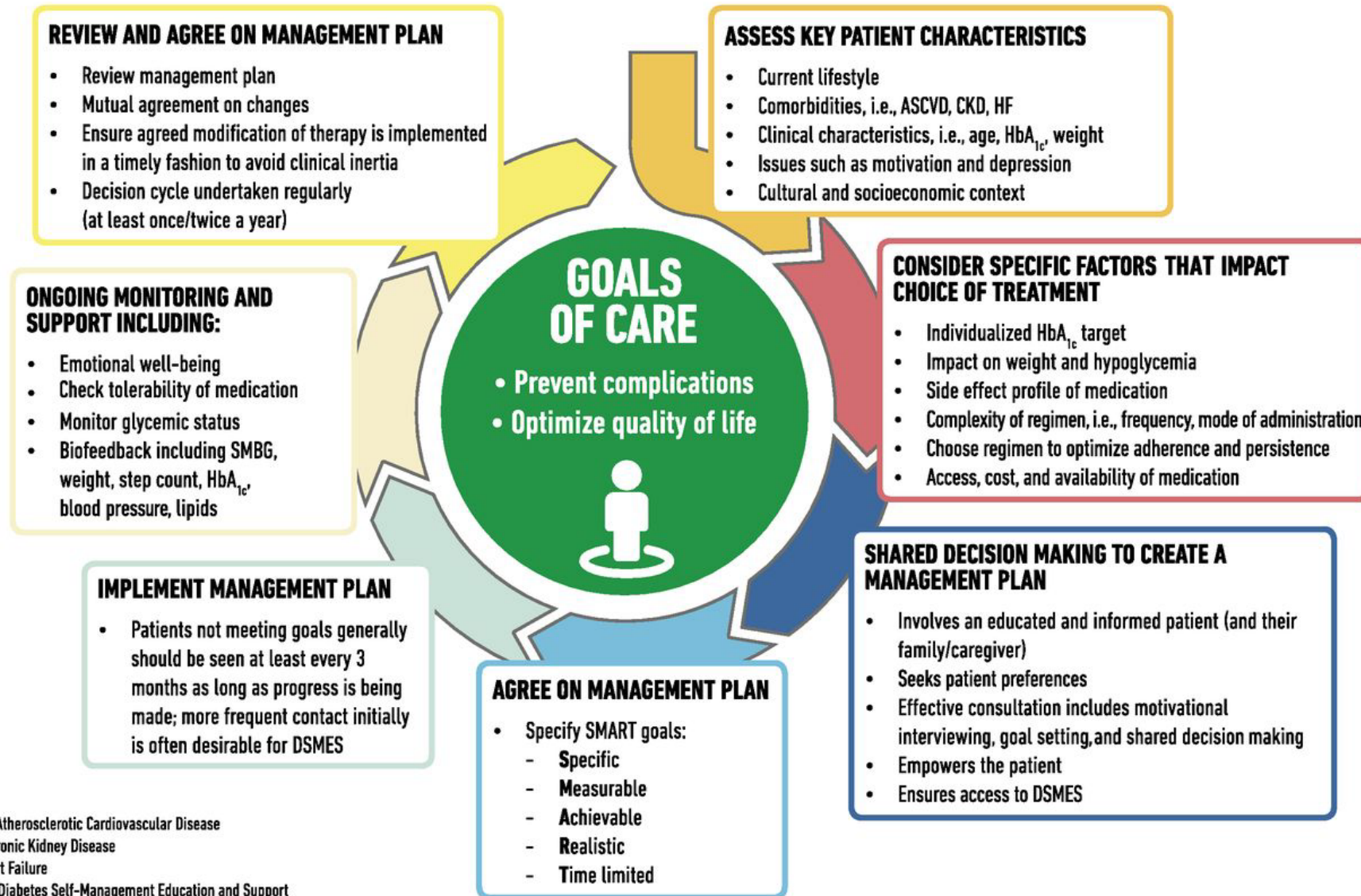


Chile's labeling system

Diabetes & NCDs Framework for a Regional Project Proposal



Patient-centered



ASCVD = Atherosclerotic Cardiovascular Disease

CKD = Chronic Kidney Disease

HF = Heart Failure

DSMES = Diabetes Self-Management Education and Support

SMBG = Self-Monitored Blood Glucose

Continuum of care (time and space)

Continuum spaces where services can be provided¹



Identification of population

Systematic assessment of risk factors

Personalized profiling

Confirmation of diagnosis

Incorporation into treatment

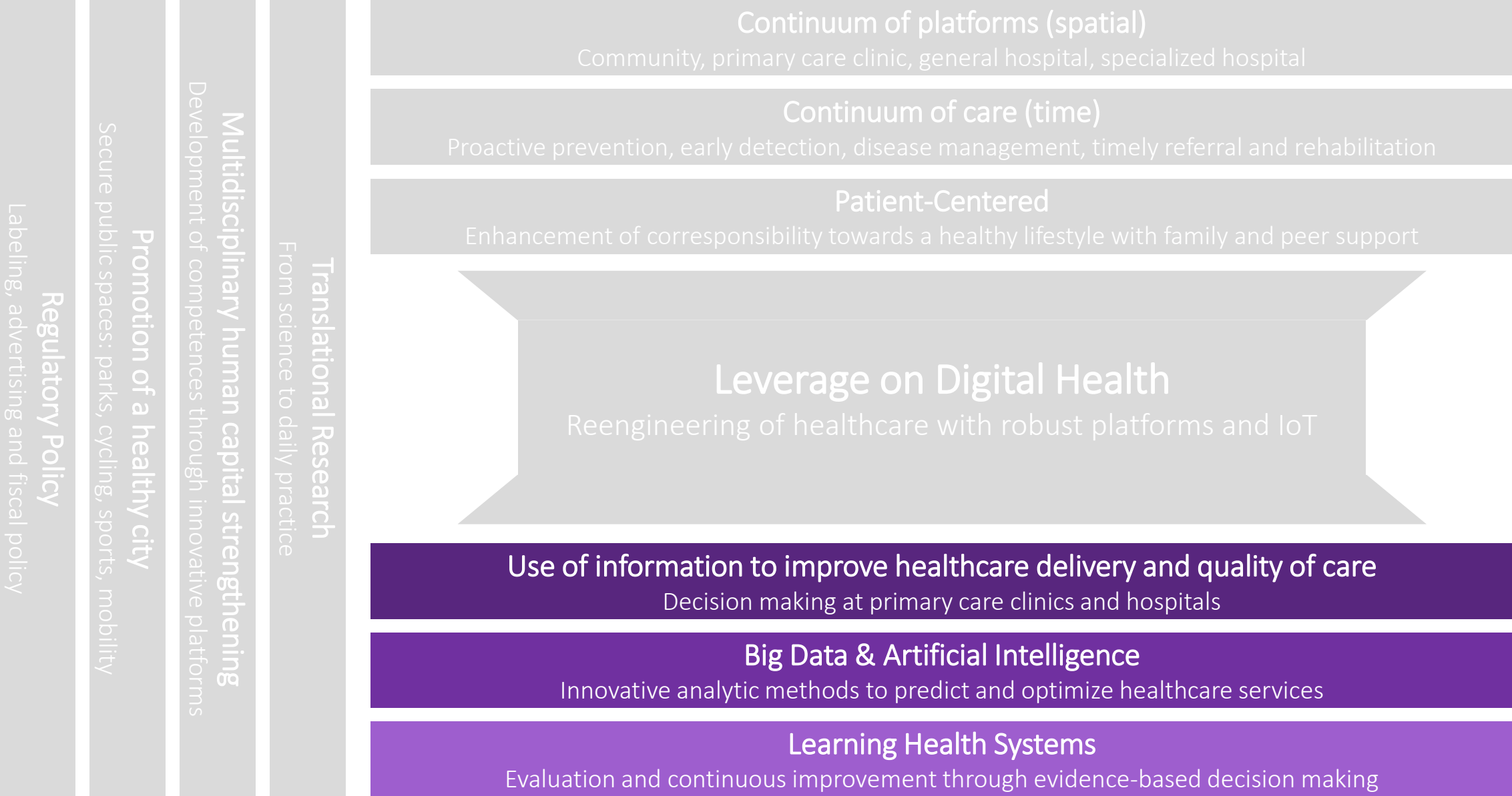
Integrated management of NCDs

Timely referral

Continuum of interventions²

1. Disease Control Priorities 3rd Edition; 2. Adapted from: Tapia-Conyer R, Saucedo-Martinez R, et al. *Int J Health Policy Manag* 2017, 6(6), 339–344

Diabetes & NCDs Framework for a Regional Project Proposal



Diabetes & NCDs Framework for a Regional Project Proposal

Regulatory Policy
Labeling, advertising and fiscal policy

Promotion of a healthy city
Secure public spaces: parks, cycling, sports, mobility

Multidisciplinary human capital strengthening
Development of competences through innovative platforms

Translational Research
From science to daily practice

Continuum of care (spatial)
Multi-platforms: Population, community, primary care clinic, general hospital, specialized hospital

Continuum of care (time)
Proactive prevention, early detection, disease management, timely referral and rehabilitation

Patient-Centered
Enhancement of corresponsibility towards a healthy lifestyle with family and peer support

Leverage on Digital Health
Reengineering of healthcare with robust platforms and IoT

Use of information to improve healthcare delivery and quality of care
Decision making at primary care clinics and hospitals

Big Data & Artificial Intelligence
Innovative analytic methods to predict and optimize healthcare services

Learning Health Systems
Evaluation and continuous improvement through evidence-based decision making